

CONDUCT OF POSSIBLE LIMITED FACE-TO-FACE CLASSES

For Third Term AY 2021-2022

Frequently Asked Questions (FAQs)

Question No. 1

What is limited face-to-face (LF2F) classes under the Alert Level System?

Answer:

As stated in Section III of [CHED DOH Joint Memorandum Circular \(JMC\) No. 2021-004](#), it "pertains to restricting the number of students who will attend face-to-face classes in-campus on any given day based on the cyclical student shifting / rotating schedule, observance of physical distancing, and other health and safety protocols."

Question No. 2

Is it mandatory for Higher Education Institutions (HEIs) to conduct limited face-to-face classes?

Answer:

NO. As stated in Section IV.A. of CHED DOH JMC No. 2021-004, limited face-to-face (LF2F) classes are not mandatory. HEIs are given the discretion either to conduct limited face-to-face classes or to continue the implementation of flexible learning modalities particularly full online learning, subject to the provisions under CHED Memorandum Order (CMO) No. 04, Series of 2020 or the Guidelines on the Implementation of Flexible Learning.

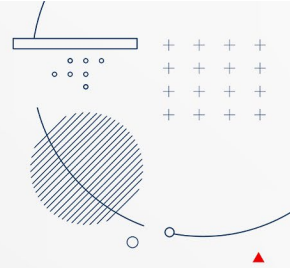
Question No. 3

With such discretion, will MCL be conducting limited face-to-face classes?

Answer:

YES. However, in consideration of all factors that may affect the health and safety of its constituents, MCL will be conducting LF2F classes ONLY for students of **selected laboratory courses*** for the following programs:

- All MITL Engineering programs (in reference to CHED Memorandum Order No. 19 s. 2021)
- All CMET programs (in reference to CHED Memorandum Order No. 20 s. 2021)



- ETYCB Hospitality and Tourism Management programs (in reference to CHED Memorandum Order No. 27 s. 2021)
- CCIS Information Technology and Computer Science programs

However, this is without prejudice to students and their parents who choose not to participate in the LF2F and prefer the **MCL Digital Choice** mode of learning engagement for such courses, except for identified courses which have no other means of learning delivery but face to face.

**See Annex for list of courses.*

Question No. 4

What is the MCL Digital Choice mode of learning engagement?

Answer:

The MCL Digital Choice mode of learning engagement is the option given by MCL to students and their parents wherein students may opt to continue taking courses in a fully online mode of learning engagement except for those required by the CHED to have LF2F mode of learning delivery. This is in line with the CHED mandate to for HEIs conduct flexible learning modalities, which shall continue to be governed by [CHED Memorandum Order \(CMO\) No. 04, Series of 2020](#), or the Guidelines on the Implementation of Flexible Learning.

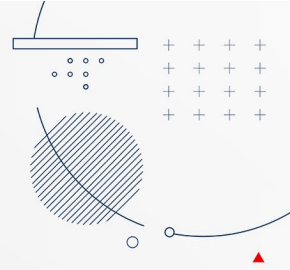
Question No. 5

In connection with Question No. 3, are there requirements for students to be allowed to participate in limited face-to-face classes for identified courses?

Answer:

YES. As stated in CHED-DOH JMC No. 2021-004, only the following students will be allowed to participate:

1. Those who are registered with PhilHealth or with equivalent medical insurance that covers medical expenses related to COVID-19. Students may be direct or indirect contributor (dependents of direct contributor) for PhilHealth (Section IV.H. of CHED-DOH JMC No. 2021-004).
2. Those who are fully vaccinated students (Section II-D, CHED-DOH JMC No. 2021-004). There will be no disruption in education for unvaccinated and not fully vaccinated students since they are governed by CMO No. 4 s. 2020 on flexible learning.



Please take note that there is no more age requirement to participate in the LF2F classes for the identified courses under the joint CHED-DOH Memorandum Circular. This means that all college students may participate regardless of age.

MCL will make further announcements on the enlistment of students who intend and are allowed to participate in the LF2F classes for identified courses.

Question No. 6

What are the health safety measures being undertaken by MCL in its planned implementation of limited face-to-face classes?

Answer:

MCL has developed and is strictly implementing institutional policies and actions that revolve around and conform with the DOH Minimum Public Health Standards as provided in DOH AO No. 2021-043 such as:

- Increasing physical and mental resilience
- Reduce transmission
- Reduce contact
- Reduce duration of infection
- Cleaning and disinfection

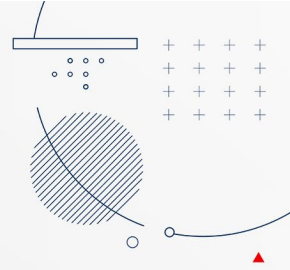
These institutional policies were considered in the accomplishment of the self-assessment checklist and the notarized affidavit of undertaking submitted by MCL to its CHED Regional Office (CHEDRO). This is to ensure that full compliance with the provisions of CHED-DOH JMC No. 2021-004 is in place anytime the CHEDRO conducts random on-site inspection of MCL in the conduct of its LF2F classes.

Question No. 7

Will MCL already allow face-to-face non-curricular student activities whether in-campus or off-campus?

Answer:

NOT YET. Given the current circumstances, MCL sees this policy of not allowing face-to-face non-curricular activities, whether in-campus or off-campus, for the time being as part of keeping with its “reduce transmission and reduce contact” public health standards. Nonetheless, MCL will continue to enhance its capability to provide its students the avenues to conduct and implement relevant non-curricular activities through its e-campus platforms.



Question No. 8

Are MCL Teaching and Non-Teaching Personnel who will be directly involved in the conduct of the limited face-to-face classes fully vaccinated?

Answer:

YES. MCL and ALL Mapua Schools have taken the initiative to implement its own vaccination program for all its teaching and non-teaching employees to be fully vaccinated in compliance with Section II-D, CHED-DOH JMC No. 2021-004. MCL employees are now in the continuing process of undergoing booster shots as part of its vaccination program.

Question No. 9

Will all students who have registered and have been verified to attend limited face-to-face allowed to enter the MCL Campus at any given time?

Answer:

NO. They will be allowed to enter the MCL Campus only during their scheduled LF2F classes and must leave immediately after.

Question No. 10

How about students who are not participating in limited face-to-face classes? Will they be allowed to enter the MCL Campus?

Answer:

As a general rule, **NO.** However, in certain very limited instances, they will be allowed to enter the MCL Campus if they have an approved appointment for the following on-site activities:

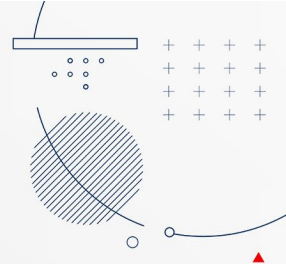
1. Submission of academic requirements.
2. Thesis defense for prototype demonstration.
3. Final assessments which require actual or practical demonstration.

Question No. 11

What are the scenarios for MCL to automatically suspend and re-open the conduct of its limited face-to-face classes?

Answer:

As stated in Section IV of CHED-DOH JMC No. 2021-004, the implementation of LF2F classes shall be preventively suspended and re-opened based on the following scenarios:



Scenario	Preventive Suspension Protocol	Reopening Protocol
1) The locality of the HEI is reclassified to Alert Level 4 or 5	Automatic preventive suspension for the entire HEI	Reclassified to Alert Level 3 or better.
2) The locality of the HEI is under granular lockdown	Automatic preventive suspension for the entire HEI	Granular lockdown lifted.
3) School/building/classroom lockdown for case clustering	The preventive suspension will be based on the assessment and decision of the Crisis Management Committee (CMC) of the HEI and upon consultation with the Local Task Force against Covid-19.	Continue limited face-to-face classes after completing contact tracing and disinfection activities, and quarantine period of the confirmed and suspected cases.

However, MCL has decided to be stricter with regards to scenario no. 1 as it will adopt automatic preventive suspension of its limited face-to-face classes if Laguna Province is classified under Alert Level 3, 4, or 5. Consequently, it will only reopen upon reclassification of Laguna Province to **Alert Level 1 or 2.**

Question No. 12

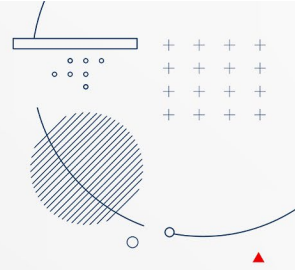
Will there be more specific guidelines to be issued on the conduct of LF2F classes?

Answer:

YES. The Office of the Vice President for Academic Affairs will be issuing the **MCL Specific Guidelines for LF2F Participants** prior to the opening of LF2F classes. Such guidelines will be regularly updated depending on the latest issuances from regulatory bodies.

References:

1. CHED-DOH Joint Memorandum Circular No. 2021 - 004
2. MCL Stakeholders' Forum, December 10, 2021



**ANNEX - LIST OF LABORATORY COURSES FOR LF2F CLASSES
3rd Term AY2021-2022**

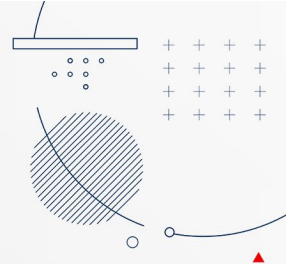
A. MITL Engineering Programs

CE200-3L	CE Project 1
CE199R-1P	OJT
CHE199R	CHE Industry Immersion
CHE200L-2	Research 2 - CHE Thesis 2
CPE199R	CPE Practicum
ECE132L	Instrumentation and Control (Laboratory)
ECE199R	OJT
EE134L	Power System Analysis 1 (Laboratory)
EE199R-1	OJT
EE198-3	EE Correlation 2
IE102L	Industrial Materials and Processes (Laboratory)
ME103L	Machine Shop Theory and Practice 1 (Laboratory)
ME199-1R	OJT/Plant Visit

B. CMET Programs (MCL Digital Choice not applicable)

MT109L	Ship Handling and Maneuvering (Laboratory)
MT126L	Deck Watchkeeping with Bridge Resource Management (Laboratory)
MT145L	Operational Use of RADAR/ARPA (Laboratory)
MT147L	Voyage Planning (Laboratory)
MT153L	Maritime Communications(Laboratory)
MT130P-1	Basic Training
ECE132L-1	Marine Automation (Laboratory)
MARE104-2L	Machining Tools (Laboratory)
MARE107L	Auxiliary Machinery 2 (Laboratory)
MARE111L	Engine Watchkeeping with Resource Management (Laboratory)
MARE164L	Power Plant Diesel (Laboratory)





C. CCIS Programs

IT154P	Interfacing Machine to Machine Communication
IT123P	Integrative Programming and Technology

D. ETYCB Programs

ACT199-11R	Accounting Internship
AIS199-11R	Accounting Information System Internship